

**REGIONAL SPECIALISED METEOROLOGICAL CENTRE-TROPICAL CYCLONES, NEW DELHI  
TROPICAL WEATHER OUTLOOK**

**DEMS-RSMC SPECIAL TROPICAL CYCLONES NEW DELHI DATED 16.12.2021**

**TROPICAL WEATHER OUTLOOK FOR NORTH INDIAN OCEAN (THE BAY OF BENGAL AND ARABIAN SEA) VALID FOR NEXT 120 HOURS ISSUED AT 0600 UTC OF 16.12.2021 BASED ON 0300 UTC OF 16.12.2021.**

**BAY OF BENGAL:**

A CYCLONIC CIRCULATION FORMED OVER EQUATORIAL INDIAN OCEAN TO THE SOUTH OF SRI LANKA WITH VERTICAL EXTENSION UPTO 5.8 KM ABOVE MEAN SEA LEVEL AT 0300 UTC OF YESTERDAY, THE 15<sup>TH</sup> DECEMBER. IT PERSISTED OVER THE SAME REGION AT 0300 UTC OF YESTERDAY, THE 16<sup>TH</sup> DECEMBER, 2021. UNDER ITS INFLUENCE, A LOW PRESSURE AREA IS LIKELY TO FORM OVER EQUATORIAL INDIAN OCEAN & ADJOINING SOUTHWEST BAY OF BENGAL AROUND 17TH DECEMBER.

SCATTERED TO BROKEN LOW AND MEDIUM CLOUDS WITH EMBEDDED MODERATE TO INTENSE CONVECTION LAY OVER SOUTHWEST ADJOINING SOUTHEAST BAY OF BENGAL. SCATTERED LOW AND MEDIUM CLOUDS WITH WEAK TO MODERATE CONVECTION LAY OVER CENTRAL BAY OF BENGAL.

**PROBABILITY OF CYCLOGENESIS (FORMATION OF DEPRESSION) DURING NEXT 120 HRS:**

24 HOURS	24-48 HOURS	48-72 HOURS	72-96 HOURS	96-120 HOURS
NIL	NIL	NIL	NIL	LOW

**ARABIAN SEA:**

SCATTERED LOW AND MEDIUM CLOUDS WITH EMBEDDED ISOLATED MODERATE TO INTENSE CONVECTION LAY OVER SOUTH ARABIAN SEA AND COMORIN. SCATTERED LOW AND MEDIUM CLOUDS WITH EMBEDDED ISOLATED WEAK TO MODERATE CONVECTION LAY OVER EASTCENTRAL ARABIAN SEA.

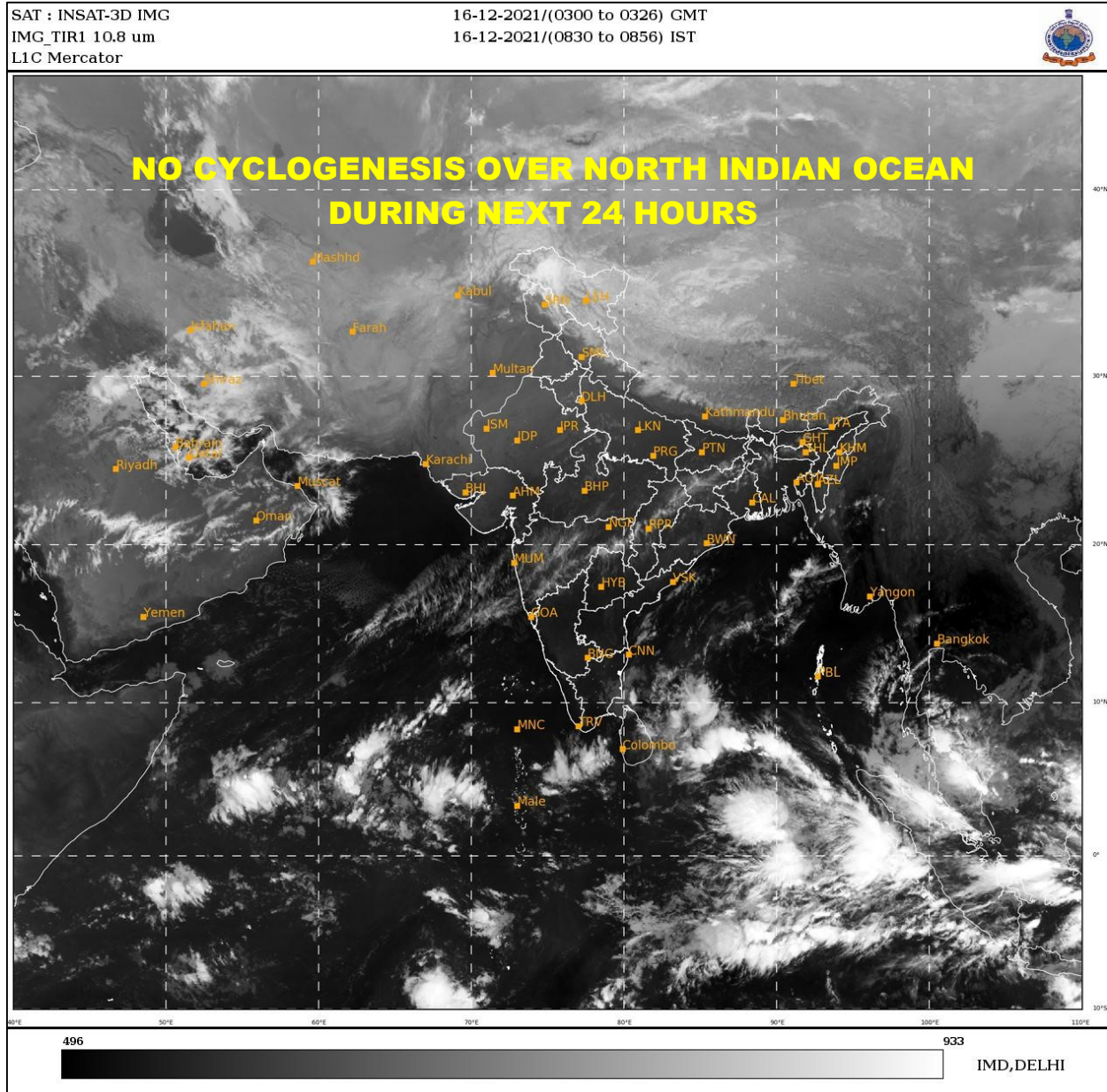
**PROBABILITY OF CYCLOGENESIS (FORMATION OF DEPRESSION) DURING NEXT 120 HRS:**

24 HOURS	24-48 HOURS	48-72 HOURS	72-96 HOURS	96-120 HOURS
NIL	NIL	NIL	NIL	NIL

**REMARKS:**

MOST OF THE MODELS ARE INDICATING LIKELY FORMATION OF LOW PRESSURE AREA OVER EQUATORIAL INDIAN OCEAN & ADJOINING SOUTHWEST BAY OF BENGAL AROUND 17<sup>TH</sup> WITH EAST-NORTHEASTWARDS MOVEMENT. HOWEVER, MODELS LIKE IMDGFS, GPP AND ECMWF (DETERMINISTIC & ENSEMBLE) ARE INDICATING THE SYSTEM TO INTENSIFY INTO A DEPRESSION AROUND 20<sup>TH</sup> DECEMBER. HOWEVER OTHER MODELS LIKE NCUM GROUP, NCEP GFS, GEFS AND NEPS ARE INDICATING NO SIGNIFICANT INTENSIFICATION OF THIS SYSTEM. HENCE

LOW PROBABILITY IS ASSIGNED TO FORMATION OF DEPRESSION OVER BAY OF BENGAL ON DAY 5 DURING 20<sup>TH</sup> – 21<sup>ST</sup> DECEMBER.



PROBABILITY OF CYCLOGENESIS (FORMATION OF DEPRESSION):NIL: 0%, LOW: 1-25%, FAIR: 26-50%, MODERATE: 51-75% AND HIGH: 76-100%  
This is a guidance Bulletin for the WMO/ESCAP Panel Member countries., Please visit respective National websites for Country specific Bulletins